



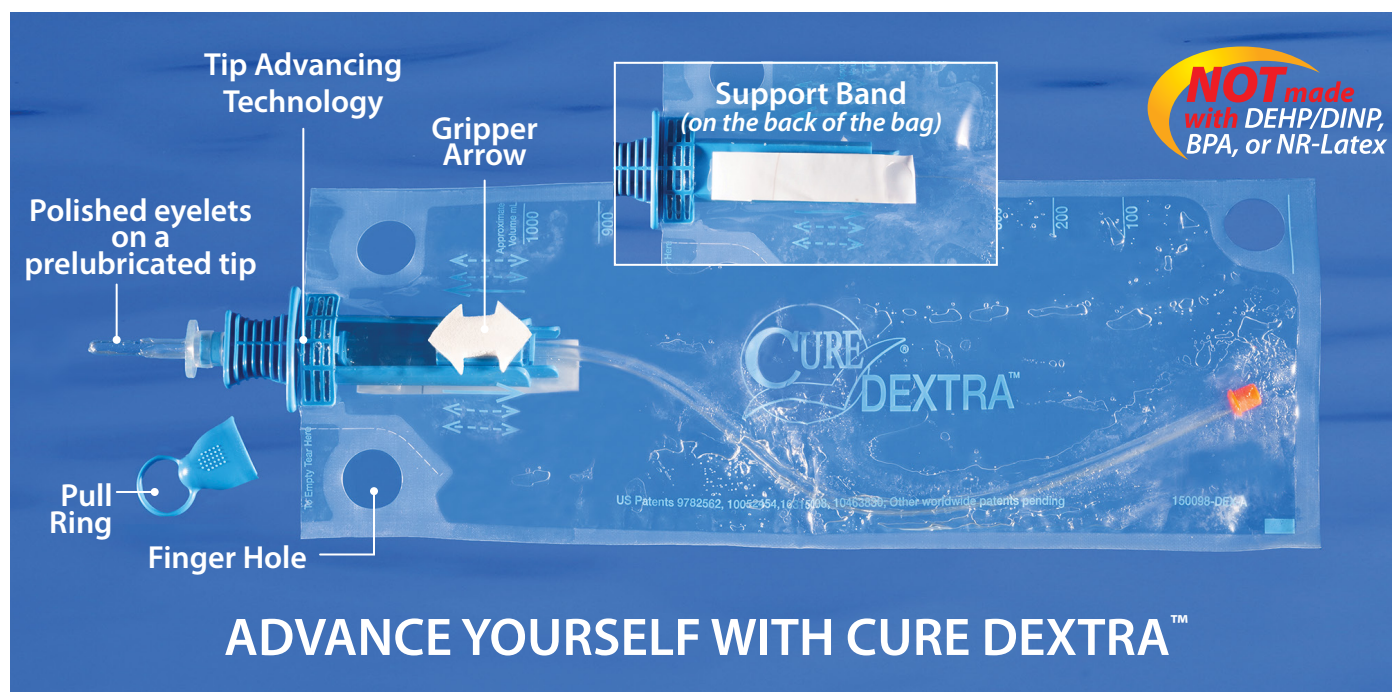
NEW PRODUCT FOR FULL TO LIMITED DEXTERITY

Request free samples • www.curemedical-dextra.com • 800.570.1778

NEW Cure Dextra™ Closed System

The sterile, single-use Cure Dextra is an innovative closed system catheter. It features polished eyelets on a pre-lubricated catheter tip with integrated 1000 ml collection bag. All users, including individuals seeking greater independence due to limited dexterity, will want to give the Cure Dextra a try. Unique attributes make the Cure Dextra easy to use:

- A **Support Band** on the back of the bag enables controlled use without the need to grip the device with two hands.
- **Tip Advancing Technology** moves the catheter out of the bag and into the body without contact.
- A **Gripper Arrow** on the front of the bag is the point of contact for advancing the catheter. Simply slide the Gripper Arrow the entire length of the chamber, in full strokes. The catheter advances with each full forward stroke. It does not retract into the bag on the full back stroke.



Offered as a case of 90 units

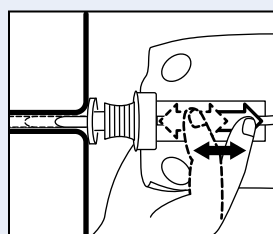
Unisex, Single

Part No.	Description	FR Size
DEX12	Closed System Single, Straight Tip	12
DEX14	Closed System Single, Straight Tip	14
DEX16	Closed System Single, Straight Tip	16

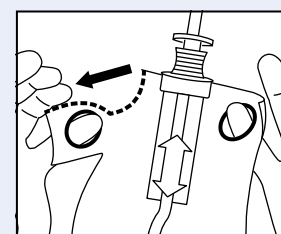
“Love this. Super easy!”

Cure Dextra user

TIPS FOR SUCCESS with the Cure Dextra™



Put Inserter Tip into the body. Slide the Gripper Arrow back and forth in full strokes to advance the catheter until urine flows.



When finished, tear the perforated bag to create an opening to drain contents. It's easy!

See video instructions at www.curemedical-dextra.com