

# Application Card

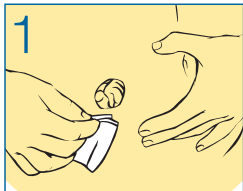
How to Use

## Eakin Cohesive® Seals\*

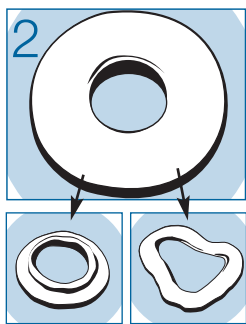
**EAKIN**  
COHESIVE® SEALS

There are several ways to use Eakin Cohesive® Seals. You can stretch to fit around the stoma, apply directly to the pouching system and fill in uneven skin.

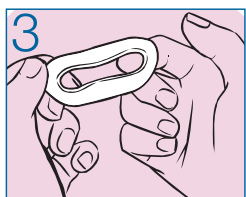
### Preparation and Application of the Seal



1 Make sure the skin surrounding the stoma is clean, dry, and free from oils, creams, and/or soap residues.



2 **Stretch to fit around the stoma.** For some people, it's easier to apply the Eakin Cohesive® Seal directly to the skin. To apply the seal around your stoma, remove release paper from both sides of the seal and shape or stretch it to fit.



3 The seal may be cut and rejoined to fit around difficult sites.



4 Then place the seal on your body and carefully mold it, making sure you have a snug fit around your stoma.

**Apply directly to the pouching system.** Some people find it simpler to apply the seal directly to their skin barrier or pouching system. To apply, remove release papers then mold to the desired shape directly on your skin barrier or pouching system.

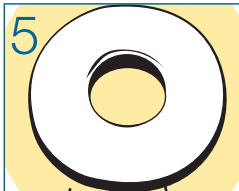
#### Useful Facts About Eakin Cohesive® Seals

- Forms a gel that protects the skin
- Can be used with all skin barriers and pouching systems
- Can be used with pastes, strips, and regular and extended-wear barriers
- Suitable for all types of ostomies
- Depending on personal preference, can be warmed by body heat (in the hands) before use for increased workability

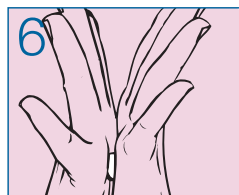
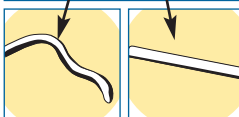
AllKare, Durahesive and Stomahesive are registered trademarks of ConvaTec Inc. Realize the possibilities is a trademark of ConvaTec Inc. Eakin Cohesive is a registered trademark of T. G. Eakin Limited

\*See package insert for complete Instructions for Use.  
© 2009 ConvaTec Inc. May 2009 AP-007475-US

### Filling In Uneven Skin

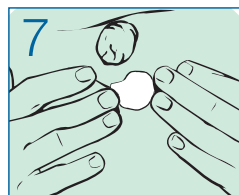


5 **Fill in uneven areas.** Some people need to fill in uneven peristomal skin to help prevent leakage.



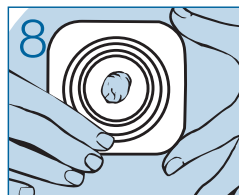
To apply, remove the release paper from both sides of the seal, break the seal into smaller pieces, and roll or mold.

You can cut and rejoin the seal as necessary.



When the Eakin Cohesive® Seal is shaped, press it into your skin. Once the seal is in contact with your skin, you can gently smooth it or mold it further and achieve a custom fit.

### Attaching your Pouching System



#### Two-Piece System

If you have already placed the seal around your stoma, press the skin barrier to your skin and the seal, then apply your pouch to the skin barrier. If you've applied the seal directly to the skin barrier, apply the skin barrier to your skin, then apply your pouch.



#### One-Piece System

If you have already placed the seal around your stoma, apply your pouching system over the seal. If you've applied the seal to your system, attach the pouching system to your skin.

Hold the pouch or skin barrier in position for a short time, to ensure the seal is secure\*.

For more information or if you have questions, call

1-800-422-8811

or visit our website at [www.ConvaTec.com](http://www.ConvaTec.com)